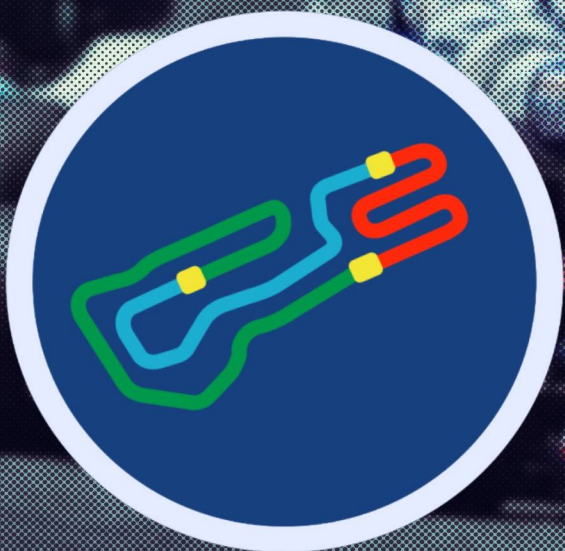
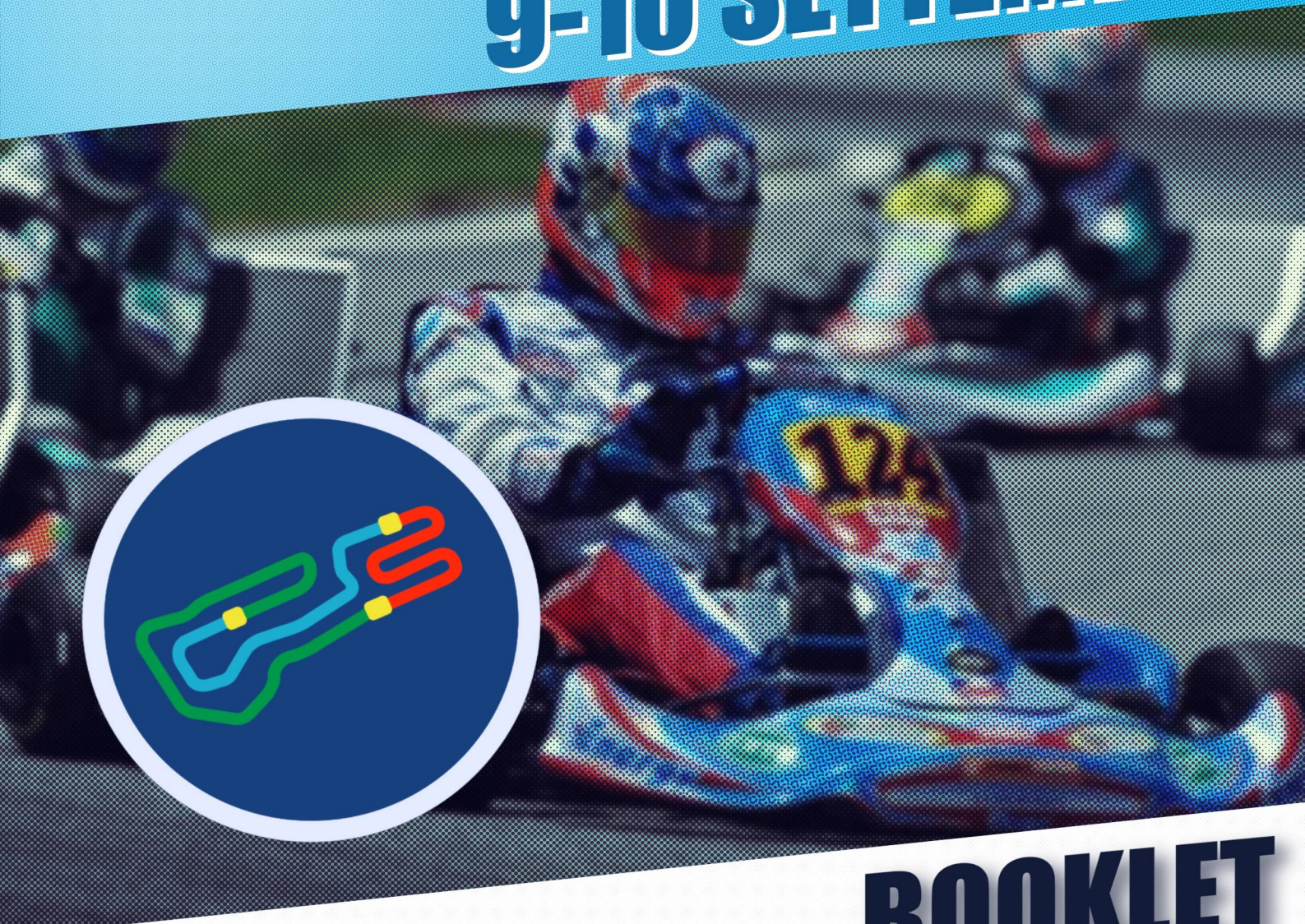


IAME SERIES
ITALY
2023

8th ROUND

SOUTH GARDA KARTING TRACK
9-10 SETTEMBRE

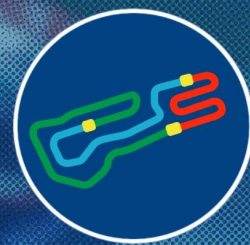


BOOKLET

**SOUTH
GARDA
KARTING**

LST *Timing*
SERVIZIO DI CRONOMETRAGGIO

Live Timing & Results
www.youcrono.it



KA100

Finale
OFFICIAL RESULTS

Document 5.1 OFFICIAL

Rnk	No.	Entrant	Nation.	Driver	Nation	Equipment	Laps	Time	Best lap	Gap	Interv.
1	804	TBKART RACING TEAM SRL	ITA	MELIS MATTEO	ITA	TBKART / IAME / KOMET	16	14:03.667	51.456		
2	830	TBKART RACING TEAM SRL	ITA	TSENG EASON	TWN	TBKART / IAME / KOMET	16	14:03.755	51.893	0.088	0.088
3	802	GRESSANI GIANNI	ITA	GRESSANI BRUNO	ITA	IPK - OK1 / IAME / KOMET	16	14:03.828	51.804	0.161	0.073
4	823	SANTAROSSA OMAR	ITA	SANTAROSSA NICHOLAS	ITA	WILD KART / IAME / KOMET	16	14:04.324	51.952	0.657	0.496
5	820	ZANINI MIRIAM	ITA	DONCHI SIMONE	ITA	TONY KART / IAME / KOMET	16	14:04.385	52.044	0.718	0.061
6	800	BATTINI FRANCO	ITA	BATTINI ALESSANDRO	ITA	IPK - OK1 / IAME / KOMET	16	14:04.874	51.884	1.207	0.489
7	821	MONDIN STEFANO	ITA	MONDIN PIETRO	ITA	PAROLIN / IAME / KOMET	16	14:07.540	52.265	3.873	2.666
8	805	COCOZZA ARGENTINO	ITA	COCOZZA ALESSANDRO	ITA	TONY KART / IAME / KOMET	16	14:08.349	51.483	4.682	0.809
9	850	GERVASI MAURO	ITA	GERVASI ERIC	ITA	IPK - OK1 / IAME / KOMET	16	14:10.659	52.372	6.992	2.310
10	855	FURLAN MARCO	ITA	FURLAN MATTIA	ITA	WILD KART / IAME / KOMET	16	14:15.776	52.754	12.109	5.117
11	854	J TEAM A.S.D.	ITA	GERMANO VIOLA	ITA	IPK - PRAGA / IAME / KOMET	16	14:30.652	53.773	26.985	14.876
12	808	GOTTI CLAUDIO	ITA	GOTTI THOMAS	ITA	WILD KART / IAME / KOMET	16	14:38.059	52.464	34.392	7.407
13	807	DE MARIA SALVATORE	ITA	DE MARIA NICHOLAS	ITA	WILD KART / IAME / KOMET	1	58.251	55.770	15 Laps	15 Laps
14	827	ARMENTO MICHELE	ITA	ARMENTO GIANLUCA	ITA	IPK - OK1 / IAME / KOMET	1	58.727	55.540	15 Laps	0.476

Leaders : No.804 MELIS MATTEO (1-7) / No.805 COCOZZA ALESSANDRO (8-11) / No.804 MELIS MATTEO (12-16)

Start Time : 10/09 - 16:07:59 / Flag Time : 16:22:03 / End Time : 16:22:38

Best lap : No.804 MELIS MATTEO 51.456 83.96 kph

Weather : Sunny Air : 29°C Track : Dry

Event Record : No.805 COCOZZA ALESSANDRO 51.345 84.14 kph

No.804 00:48

No.805 00:51

Pres. del Collegio



Comm. del Collegio

Anna Scholte

Comm. del Collegio

Annalisa Rucifella

IAME SERIES ITALY RND8 - LONATO (BS) (Italy) 09-10/09/2023

Page 1 / 2

LSTiming

Apex Timing GoRacing **APEX**





KA100

Finale
OFFICIAL RESULTS

Document 5.1 OFFICIAL

Rnk	No.	Entrant	Nation.	Driver	Nation	Equipment	Laps	Time	Best lap	Gap	Interv.
KA100 Jr											
1	=	804	TBKART RACING TEAM SRL	ITA	MELIS MATTEO	ITA	TBKART / IAME / KOMET	16	14:03.667	51.456	
2	▲1	830	TBKART RACING TEAM SRL	ITA	TSENG EASON	TWN	TBKART / IAME / KOMET	16	14:03.755	51.893	0.088
3	▲6	802	GRESSANI GIANNI	ITA	GRESSANI BRUNO	ITA	IPK - OK1 / IAME / KOMET	16	14:03.828	51.804	0.161
4	▲3	823	SANTAROSSA OMAR	ITA	SANTAROSSA NICHOLAS	ITA	WILD KART / IAME / KOMET	16	14:04.324	51.952	0.657
5	▼1	820	ZANINI MIRIAM	ITA	DONCHI SIMONE	ITA	TONY KART / IAME / KOMET	16	14:04.385	52.044	0.718
6	▼1	800	BATTINI FRANCO	ITA	BATTINI ALESSANDRO	ITA	IPK - OK1 / IAME / KOMET	16	14:04.874	51.884	1.207
7	▲1	821	MONDIN STEFANO	ITA	MONDIN PIETRO	ITA	PAROLIN / IAME / KOMET	16	14:07.540	52.265	3.873
8	▼6	805	COCOZZA ARGENTINO	ITA	COCOZZA ALESSANDRO	ITA	TONY KART / IAME / KOMET	16	14:08.349	51.483	4.682
9	▼3	808	GOTTI CLAUDIO	ITA	GOTTI THOMAS	ITA	WILD KART / IAME / KOMET	16	14:38.059	52.464	34.392
10	=	807	DE MARIA SALVATORE	ITA	DE MARIA NICHOLAS	ITA	WILD KART / IAME / KOMET	1	58.251	55.770	15 Laps
11	=	827	ARMENTO MICHELE	ITA	ARMENTO GIANLUCA	ITA	IPK - OK1 / IAME / KOMET	1	58.727	55.540	15 Laps

KA100 Sr

1	=	850	GERVASI MAURO	ITA	GERVASI ERIC	ITA	IPK - OK1 / IAME / KOMET	16	14:10.659	52.372	
2	=	855	FURLAN MARCO	ITA	FURLAN MATTIA	ITA	WILD KART / IAME / KOMET	16	14:15.776	52.754	5.117
3	=	854	J TEAM A.S.D.	ITA	GERMANO VIOLA	ITA	IPK - PRAGA / IAME / KOMET	16	14:30.652	53.773	19.993

Leaders : No.804 MELIS MATTEO (1-7) / No.805 COCOZZA ALESSANDRO (8-11) / No.804 MELIS MATTEO (12-16)

Start Time : 10/09 - 16:07:59 / Flag Time : 16:22:03 / End Time : 16:22:38 Best lap : No.804 MELIS MATTEO 51.456 83.96 kph

Weather : Sunny Air : 29°C Track : Dry Event Record : No.805 COCOZZA ALESSANDRO 51.345 84.14 kph

No.804 00:48

No.805 00:51

Pres. del Collegio



Comm. del Collegio

Anna Scholte

Comm. del Collegio

Annalisa Rucletti

IAME SERIES ITALY RND8 - LONATO (BS) (Italy) 09-10/09/2023

Page 2 / 2

LSTiming

Apex Timing GoRacing **APEX**





KA100

Finale
Lap Chart

For information purposes. No official / regulatory value

	1	2	3	4	5	6	7	8	9	10	11	12	13	14
Grid	804	805	830	820	800	808	823	821	802	850	807	827	855	854
Start	804	830	800	805	820	823	802	821	807	850	808	855	827	854
Lap 1 Interval	804	805 0.4	830 0.5	820 0.1	823 0.4	802 0.4	850 0.8	821 0.1	800 0.0	807 0.2	855 0.3	827 0.1	854 0.6	808 25.8
Lap 2	804	805 0.2	830 0.9	820 0.2	823 0.1	802 0.8	850 0.8	800 0.6	821 0.1	855 2.2	854 0.4	808 24.7		
Lap 3	804	805 0.3	830 1.3	820 0.2	823 0.2	802 0.4	850 1.2	800 0.5	821 0.3	855 3.0	854 0.5	808 24.2		
Lap 4	804	805 0.2	830 1.6	820 0.1	823 0.2	802 0.4	850 1.7	800 0.4	821 0.3	855 3.8	854 1.3	808 23.2		
Lap 5	804	805 0.1	830 1.8	820 0.2	823 0.1	802 0.3	850 2.4	800 0.4	821 0.2	855 4.3	854 2.7	808 21.6		
Lap 6	804	805 0.2	830 2.1	820 0.3	823 0.1	802 0.2	850 3.1	800 0.2	821 0.3	855 4.6	854 3.9	808 20.6		
Lap 7	804	805 0.2	823 3.2	802 0.3	830 0.1	820 1.5	800 2.0	850 0.1	821 0.2	855 4.5	854 5.1	808 19.2		
Lap 8	805	804 0.2	823 3.3	830 0.5	802 0.2	820 2.8	800 0.4	821 1.1	850 0.1	855 4.3	854 6.2	808 18.1		
Lap 9	805	804 0.2	830 3.8	823 0.0	802 0.1	820 3.3	800 0.2	821 1.2	850 0.2	855 4.6	854 7.4	808 16.6		
Lap 10	805	804 0.3	823 4.2	830 0.6	802 0.5	820 2.2	800 0.2	821 1.4	850 0.4	855 5.0	854 8.5	808 15.4		
Lap 11	805	804 0.2	823 4.9	830 0.3	802 0.4	820 2.5	800 0.3	821 1.5	850 0.4	855 5.6	854 9.4	808 14.1		
Lap 12	804	805 0.5	823 5.1	802 0.4	830 0.3	820 1.9	800 0.4	821 1.8	850 0.5	855 6.1	854 10.2	808 12.8		
Lap 13	804	805 0.3	802 6.1	830 0.5	823 0.3	820 1.5	800 0.5	821 2.2	850 2.7	855 4.5	854 10.9	808 11.6		
Lap 14	804	805 0.2	802 4.6	830 0.4	823 0.7	820 1.2	800 0.3	821 2.9	850 2.9	855 4.7	854 12.1	808 10.3		
Lap 15	804	802 0.3	830 0.4	823 1.2	820 1.9	800 0.3	821 2.5	805 1.0	850 1.8	855 4.8	854 13.4	808 8.9		
Lap 16	804	830 0.0	802 0.0	823 0.4	820 0.0	800 0.4	821 2.6	805 0.8	850 2.3	855 5.1	854 14.8	808 7.4		

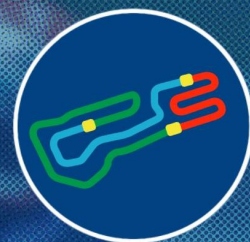
Direttore di Gara



IAME SERIES ITALY RND8 - LONATO (BS) (Italy) 09-10/09/2023

LSTiming





KA100

Finale
Analysis

For information purposes. No official / regulatory value

Laps	Sector 1	Sector 2	Sector 3	Lap Time	Spd	Laps	Sector 1	Sector 2	Sector 3	Lap Time	Spd	Laps	Sector 1	Sector 2	Sector 3	Lap Time	Spd					
No.800 BATTINI ALESSANDRO						14	20.709	17.022	15.881	53.612	84	8	21.941	16.359	15.478	53.778	85					
1	22.542	17.314	16.222	56.078	85	15	20.777	19.050	16.698	56.525	84	9	20.796	16.262	15.406	52.464	85					
2	21.313	16.467	15.675	53.455	87	16	21.982	17.240	16.200	55.422	82	10	20.636	16.126	15.330	52.092	86					
3	20.832	16.323	15.461	52.616	86	No.805 COCOZZA ALESSANDRO						11	20.584	16.164	15.356	52.104	86					
4	20.800	16.196	15.441	52.437	87	1	21.609	16.479	15.406	53.494	86	12	20.616	16.129	15.399	52.144	85					
5	20.680	16.336	15.552	52.568	88	2	20.676	16.268	15.392	52.336	86	13	20.602	16.190	15.323	52.115	86					
6	20.750	16.330	15.393	52.473	88	3	20.659	16.158	15.330	52.147	86	14	20.589	16.158	15.329	52.076	85					
7	20.908	16.255	15.621	52.784	86	4	20.522	16.069	15.281	51.872	87	15	20.595	16.960	15.557	53.112	85					
8	20.800	16.143	15.241	52.184	88	5	20.500	16.036	15.257	51.793	86	16	20.671	16.164	15.374	52.209	87					
9	20.558	16.255	15.422	52.235	88	6	20.505	16.037	15.179	51.721	87	No.821 MONDIN PIETRO										
10	20.543	16.273	15.257	52.073	88	7	20.509	15.994	15.194	51.697	86	1	22.315	17.424	15.940	55.679	85					
11	20.616	16.147	15.455	52.218	87	8	20.514	16.074	15.210	51.798	86	2	21.479	16.511	15.652	53.642	87					
12	20.647	16.166	15.415	52.228	87	9	20.656	16.133	15.162	51.951	85	3	20.781	16.296	15.729	52.806	86					
13	20.723	16.133	15.342	52.198	87	10	20.558	16.072	15.106	51.736	86	4	20.648	16.307	15.479	52.434	86					
14	20.630	16.090	15.164	51.884	88	11	20.467	16.006	15.107	51.580	86	5	20.660	16.198	15.584	52.442	86					
15	20.434	16.691	15.977	53.102	87	12	21.556	16.112	15.195	52.863	86	6	20.600	16.526	15.409	52.535	86					
16	20.702	16.244	15.434	52.380	86	13	20.379	15.947	15.157	51.483	86	7	20.727	16.716	15.512	52.955	86					
No.802 GRESSANI BRUNO						14	20.469	17.060	15.999	53.528	85	8	20.644	16.585	15.630	52.859	85					
1	22.203	16.932	15.537	54.672	87	15	20.721	27.186	16.190	1:04.097	86	9	20.663	16.266	15.445	52.374	86					
2	21.059	16.507	15.387	52.953	86	16	20.741	16.177	15.352	52.270	84	10	20.632	16.223	15.410	52.265	86					
3	20.769	16.251	15.339	52.359	87	No.807 DE MARIA NICHOLAS						11	20.670	16.270	15.385	52.325	85					
4	20.559	16.195	15.267	52.021	87	1	22.512	17.282	15.976	55.770	86	12	20.731	16.305	15.414	52.450	86					
5	20.520	16.135	15.264	51.919	87	No.808 GOTTI THOMAS						13	20.753	16.345	15.511	52.609	85					
6	20.542	16.059	15.336	51.937	86	1	34.311	25.948	22.398	1:22.657	82	14	20.831	16.386	15.361	52.578	86					
7	20.707	16.319	15.416	52.442	84	2	21.541	16.660	15.706	53.907	84	15	20.765	16.461	15.490	52.716	86					
8	20.601	16.184	15.809	52.594	86	3	21.139	16.502	15.673	53.314	84	16	20.804	16.304	15.410	52.518	86					
9	20.447	16.066	15.427	51.940	86	4	21.011	16.435	15.545	52.991	84	No.823 SANTAROSSA NICHOLAS										
10	20.744	16.315	16.104	53.163	86	5	20.983	16.352	15.464	52.799	84	1	22.128	16.603	15.653	54.384	86					
11	20.515	16.087	15.202	51.804	87	6	20.986	16.393	15.523	52.902	84	2	20.735	16.376	15.440	52.551	87					
12	20.614	16.470	15.340	52.424	87	7	20.889	16.307	15.469	52.665	83	3	20.701	16.568	15.509	52.778	87					
13	20.540	16.274	15.189	52.003	86	8	20.912	16.353	15.497	52.762	84	4	20.498	16.168	15.358	52.024	87					
14	20.662	16.187	15.216	52.065	86	9	20.861	16.307	15.456	52.624	84	5	20.497	16.170	15.285	51.952	87					
15	20.664	16.114	15.193	51.971	86	10	20.885	16.404	15.417	52.706	84	6	20.573	16.140	15.331	52.044	87					
16	21.767	17.341	16.118	55.226	84	11	20.761	16.336	15.367	52.464	84	7	20.872	16.234	15.318	52.424	84					
No.804 MELIS MATTEO						12	20.761	16.321	15.472	52.554	84	8	20.647	16.226	15.197	52.070	85					
1	21.560	16.511	15.527	53.598	85	13	20.825	16.416	15.539	52.780	83	9	20.716	16.193	15.685	52.594	86					
2	20.734	16.348	15.414	52.496	85	14	20.875	16.384	15.531	52.790	84	10	20.735	16.146	15.229	52.110	86					
3	20.630	16.154	15.293	52.077	85	15	20.947	16.329	15.496	52.772	84	11	20.708	16.272	15.212	52.192	86					
4	20.526	16.167	15.252	51.945	86	16	20.788	16.484	15.551	52.823	84	12	21.010	16.478	15.351	52.839	85					
5	20.496	16.061	15.292	51.849	85	No.820 DONCHI SIMONE						13	20.775	16.933	15.559	53.267	86					
6	20.436	16.069	15.194	51.699	85	1	21.954	16.606	15.518	54.078	88	14	20.626	16.379	15.373	52.378	86					
7	20.472	16.013	15.186	51.671	86	2	20.948	16.422	15.471	52.841	87	15	20.639	16.378	15.450	52.467	86					
8	20.868	16.107	15.256	52.231	86	3	20.479	16.764	15.411	52.654	87	16	20.906	16.650	16.514	54.070	84					
9	20.506	16.242	15.266	52.014	86	4	20.477	16.253	15.331	52.061	87	No.827 ARMENTO GIANLUCA										
10	20.411	16.117	15.322	51.850	86	5	20.548	16.126	15.383	52.057	86	1	22.566	17.108	15.866	55.540	86					
11	20.315	16.001	15.140	51.456	87	6	20.538	16.132	15.374	52.044	86	No.830 TSENG EASON										
12	20.826	16.086	15.144	52.056	86	7	20.502	16.209	17.773	54.484	60	1	21.601	16.997	15.714	54.312	86					
13	20.500	16.033	15.157	51.690	86																	



KA100

Finale Analysis

For information purposes. No official / regulatory value

Laps	Sector 1	Sector 2	Sector 3	Lap Time	Spd
2	20.900	16.364	15.469	52.733	86
3	20.856	16.332	15.405	52.593	86
4	20.585	16.197	15.381	52.163	86
5	20.501	16.152	15.316	51.969	86
6	20.572	16.136	15.316	52.024	86
7	21.004	16.198	16.076	53.278	81
8	20.702	16.094	15.396	52.192	86
9	20.475	16.014	15.445	51.934	85
10	20.944	16.216	15.703	52.863	86
11	20.499	16.089	15.305	51.893	86
12	20.676	16.799	15.789	53.264	86
13	20.424	16.392	15.354	52.170	86
14	20.454	16.145	15.372	51.971	86
15	20.491	16.126	15.318	51.935	87
16	21.335	17.215	16.199	54.749	84

No.850 GERVASI ERIC

1	22.421	16.982	15.907	55.310	84
2	21.057	16.399	15.536	52.992	85
3	20.883	16.252	15.586	52.721	84
4	20.837	16.265	15.467	52.569	84
5	20.879	16.240	15.460	52.579	84
6	20.954	16.250	15.464	52.668	84
7	21.156	16.537	15.489	53.182	84
8	20.808	16.649	15.788	53.245	84
9	20.787	16.254	15.528	52.569	84
10	20.770	16.146	15.496	52.412	84
11	20.720	16.163	15.489	52.372	83
12	20.800	16.226	15.524	52.550	84
13	22.713	16.470	15.635	54.818	83
14	20.948	16.258	15.499	52.705	83
15	20.953	16.260	15.526	52.739	83
16	20.965	16.207	15.516	52.688	83

No.854 GERMANO VIOLA

1	22.844	17.237	15.937	56.018	82
2	21.666	17.313	16.015	54.994	82
3	21.364	16.799	15.610	53.773	82
4	21.488	16.817	15.706	54.011	82
5	21.555	16.998	15.814	54.367	81
6	21.458	16.785	15.686	53.929	81
7	21.601	16.775	15.734	54.110	81
8	21.448	16.782	15.606	53.836	82
9	21.500	16.881	15.690	54.071	81
10	21.516	16.738	15.654	53.908	80
11	21.403	16.811	15.628	53.842	81
12	21.363	16.872	15.607	53.842	81
13	21.496	16.845	15.597	53.938	82
14	21.447	16.911	15.750	54.108	81
15	21.291	16.954	15.921	54.166	80

Laps	Sector 1	Sector 2	Sector 3	Lap Time	Spd
16	21.587	16.923	15.867	54.377	80

No.855 FURLAN MATTIA

1	22.875	17.065	15.981	55.921	85
2	22.716	16.878	15.778	55.372	84
3	21.262	16.597	15.745	53.604	84
4	21.014	16.564	15.680	53.258	84
5	20.929	16.422	15.573	52.924	83
6	20.957	16.391	15.451	52.799	84
7	20.949	16.535	15.384	52.868	84
8	20.918	16.354	15.482	52.754	83
9	21.006	16.509	15.383	52.898	83
10	20.860	16.316	15.633	52.809	83
11	20.967	16.524	15.409	52.900	83
12	21.064	16.454	15.572	53.090	84
13	21.039	16.691	15.492	53.222	84
14	20.901	16.430	15.568	52.899	83
15	21.001	16.437	15.419	52.857	83
16	20.930	16.514	15.500	52.944	84



KA100

Finale
Starting Grid

854 GERMANO VIOLA IPK - PRAGA / IAME / KOMET		7	855 FURLAN MATTIA WILD KART / IAME / KOMET	
827 ARMENTO GIANLUCA IPK - OK1 / IAME / KOMET		6	807 DE MARIA NICHOLAS WILD KART / IAME / KOMET	
850 GERVASI ERIC IPK - OK1 / IAME / KOMET		5	802 GRESSANI BRUNO IPK - OK1 / IAME / KOMET	
821 MONDIN PIETRO PAROLIN / IAME / KOMET		4	823 SANTAROSSA NICHOLAS WILD KART / IAME / KOMET	
808 GOTTI THOMAS WILD KART / IAME / KOMET		3	800 BATTINI ALESSANDRO IPK - OK1 / IAME / KOMET	
820 DONCHI SIMONE TONY KART / IAME / KOMET		2	830 TSENG EASON TBKART / IAME / KOMET	
805 COCOZZA ALESSANDRO TONY KART / IAME / KOMET		1	804 MELIS MATTEO TBKART / IAME / KOMET	

POLE POSITION



Start : 10/09 - 15:50 16 Laps = 19.200 km

Pres. del Collegio



Comm. del Collegio

Anna Scholte

Comm. del Collegio

Annalisa Raudolfi

IAME SERIES ITALY RND8 - LONATO (BS) (Italy) 09-10/09/2023

LSTiming

Page 1 / 1

Apex Timing GoRacing



KA100

Prefinale
OFFICIAL RESULTS

Document 4.1 OFFICIAL

Rnk	No.	Entrant	Nation	Driver	Nation	Equipment	Laps	Time	Best lap	Gap	Interv.	Penalty
1 =	804	TBKART RACING TEAM SR	ITA	MELIS MATTEO	ITA	TBKART / IAME / KOMET	14	12:08.272	51.446			
2 =	805	COCOZZA ARGENTINO	ITA	COCOZZA ALESSANDRO	ITA	TONY KART / IAME / KOMET	14	12:08.727	51.345	0.455	0.455	
3 =	830	TBKART RACING TEAM SR	ITA	TSENG EASON	TWN	TBKART / IAME / KOMET	14	12:12.719	51.625	4.447	3.992	
4 =	820	ZANINI MIRIAM	ITA	DONCHI SIMONE	ITA	TONY KART / IAME / KOMET	14	12:14.075	51.620	5.803	1.356	
5 =	800	BATTINI FRANCO	ITA	BATTINI ALESSANDRO	ITA	IPK - OK1 / IAME / KOMET	14	12:14.584	51.680	6.312	0.509	
6 ▲1	808	GOTTI CLAUDIO	ITA	GOTTI THOMAS	ITA	WILD KART / IAME / KOMET	14	12:17.325	51.894	9.053	2.741	
7 ▲1	823	SANTAROSSA OMAR	ITA	SANTAROSSA NICHOLA	ITA	WILD KART / IAME / KOMET	14	12:17.926	51.766	9.654	0.601	
8 ▲1	821	MONDIN STEFANO	ITA	MONDIN PIETRO	ITA	PAROLIN / IAME / KOMET	14	12:19.462	51.962	11.190	1.536	
9 ▲1	802	GRESSANI GIANNI	ITA	GRESSANI BRUNO	ITA	IPK - OK1 / IAME / KOMET	14	12:21.906	51.704	13.634	2.444	+5.000
10 ▼4	850	GERVASI MAURO	ITA	GERVASI ERIC	ITA	IPK - OK1 / IAME / KOMET	14	12:22.208	52.093	13.936	0.302	
11 ▲2	807	DE MARIA SALVATORE	ITA	DE MARIA NICHOLAS	ITA	WILD KART / IAME / KOMET	14	12:22.419	52.335	14.147	0.211	
12 =	827	ARMENTO MICHELE	ITA	ARMENTO GIANLUCA	ITA	IPK - OK1 / IAME / KOMET	14	12:22.782	52.000	14.510	0.363	
13 ▼2	855	FURLAN MARCO	ITA	FURLAN MATTIA	ITA	WILD KART / IAME / KOMET	14	12:25.110	52.418	16.838	2.328	
14 =	854	J TEAM A.S.D.	ITA	GERMANO VIOLA	ITA	IPK - PRAGA / IAME / KOMET	14	12:41.243	53.608	32.971	16.133	

No.802 GRESSANI BRUNO : Carenatura anteriore in posizione non corretta. Secondo le decisioni degli steward N° 22.

Leaders : No.804 MELIS MATTEO (1-9) / No.805 COCOZZA ALESSANDRO (10-10) / No.804 MELIS MATTEO (11-14)

Start Time : 10/09 - 14:05:37 / Flag Time : 14:17:46 / End Time : 14:18:19 Best lap : No.805 COCOZZA ALESSANDRO 51.345 84.14 kph

Weather : Sunny Air : 29°C Track : Dry Previous Event Record : No.804 MELIS MATTEO 51.397 84.05 kph

No.830 01:20 Lap 1

Pres. del Collegio



Comm. del Collegio

Anna Scholte

Comm. del Collegio

Annalisa Rucifery

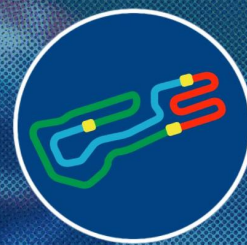
IAME SERIES ITALY RND8 - LONATO (BS) (Italy) 09-10/09/2023

Page 1 / 2

LSTiming

Apex Timing GoRacing





KA100

Prefinale
OFFICIAL RESULTS

Document 4.1 OFFICIAL

Rnk	No.	Entrant	Nation	Driver	Nation	Equipment	Laps	Time	Best lap	Gap	Interv.	Penalty		
KA100 Jr														
1	=	804	ITA	TBKART RACING TEAM SR	ITA	MELIS MATTEO	ITA	TBKART / IAME / KOMET	14	12:08.272	51.446			
2	=	805	ITA	COCOZZA ARGENTINO	ITA	COCOZZA ALESSANDRO	ITA	TONY KART / IAME / KOMET	14	12:08.727	51.345	0.455	0.455	
3	=	830	ITA	TBKART RACING TEAM SR	TWN	TSENG EASON	ITA	TBKART / IAME / KOMET	14	12:12.719	51.625	4.447	3.992	
4	=	820	ITA	ZANINI MIRIAM	ITA	DONCHI SIMONE	ITA	TONY KART / IAME / KOMET	14	12:14.075	51.620	5.803	1.356	
5	=	800	ITA	BATTINI FRANCO	ITA	BATTINI ALESSANDRO	ITA	IPK - OK1 / IAME / KOMET	14	12:14.584	51.680	6.312	0.509	
6	=	808	ITA	GOTTI CLAUDIO	ITA	GOTTI THOMAS	ITA	WILD KART / IAME / KOMET	14	12:17.325	51.894	9.053	2.741	
7	=	823	ITA	SANTAROSSA OMAR	ITA	SANTAROSSA NICHOLA	ITA	WILD KART / IAME / KOMET	14	12:17.926	51.766	9.654	0.601	
8	=	821	ITA	MONDIN STEFANO	ITA	MONDIN PIETRO	ITA	PAROLIN / IAME / KOMET	14	12:19.462	51.962	11.190	1.536	
9	=	802	ITA	GRESSANI GIANNI	ITA	GRESSANI BRUNO	ITA	IPK - OK1 / IAME / KOMET	14	12:21.906	51.704	13.634	2.444	+5.000
10	▲1	807	ITA	DE MARIA SALVATORE	ITA	DE MARIA NICHOLAS	ITA	WILD KART / IAME / KOMET	14	12:22.419	52.335	14.147	0.513	
11	▼1	827	ITA	ARMENTO MICHELE	ITA	ARMENTO GIANLUCA	ITA	IPK - OK1 / IAME / KOMET	14	12:22.782	52.000	14.510	0.363	

No.802 GRESSANI BRUNO : Carenatura anteriore in posizione non corretta. Secondo le decisioni degli steward N° 22.

KA100 Sr													
1	=	850	ITA	GERVASI MAURO	ITA	GERVASI ERIC	ITA	IPK - OK1 / IAME / KOMET	14	12:22.208	52.093		
2	=	855	ITA	FURLAN MARCO	ITA	FURLAN MATTIA	ITA	WILD KART / IAME / KOMET	14	12:25.110	52.418	2.902	2.902
3	=	854	ITA	J TEAM A.S.D.	ITA	GERMANO VIOLA	ITA	IPK - PRAGA / IAME / KOMET	14	12:41.243	53.608	19.035	16.133

Leaders : No.804 MELIS MATTEO (1-9) / No.805 COCOZZA ALESSANDRO (10-10) / No.804 MELIS MATTEO (11-14)

Start Time : 10/09 - 14:05:37 / Flag Time : 14:17:46 / End Time : 14:18:19 Best lap : No.805 COCOZZA ALESSANDRO 51.345 84.14 kph

Weather : Sunny Air : 29°C Track : Dry Previous Event Record : No.804 MELIS MATTEO 51.397 84.05 kph

No.830 01:20 Lap 1

Pres. del Collegio



Comm. del Collegio

Anna Scholte

Comm. del Collegio

Annalisa Raudelli

IAME SERIES ITALY RND8 - LONATO (BS) (Italy) 09-10/09/2023

Page 2 / 2

LSTiming

Apex Timing GoRacing **APEX**





DOCUMENT N° 22

DECISIONE DEI COMMISSARI SPORTIVI
STEWARDS' DECISION

PENALITA INFLITTA AL CONCORRENTE (NOME): **GRESSANI GIANNI**
PENALTY INFLICTED UPON THE ENTRANT (NAME):

NAZIONALITA / NATIONALITY: **ITA**

No.: **802** PILOTA : **GRESSANI BRUNO**
No.: DRIVER :

Parte dell'evento: **KA100 - Prefinale**
Concerns the part of the event:

DECISIONE / STATEMENT

5 sec. di penalità nella sessione sopra indicata

MOTIVAZIONE / REASON:

La carenatura anteriore del kart sopra menzionato era in posizione non corretta.

Visto il Report del Delegato Tecnico (doc. 6.13)

Visto RDS ACI Sport 2023 Regolamento Tecnico Art. 4.14.2 - 4.14.3 comma a-b-c-d-e-f-g

Visto l'art. 24 - 33W) RDSS Karting 2023

Si ricorda al concorrente, ai sensi dell'Art. 215 Bis del Regolamento Sportivo Nazionale che la suddetta sanzione è inappellabile.

Per questi motivi, il Concorrente è stato ritenuto responsabile della violazione sopra riportata ed i CCSS ritengono appropriata la penalità inflitta secondo i poteri conferiti dal Regolamento Sportivo Nazionale.

Decisione annunciata
Decision announced

Data / Date: **10/09/2023**

Ora / Time: **14:25**

Nome / Name

Firma / Signature

Presidente del Collegio / Chairman of the Panel:

Angela Chillon (ITA)

Membri del Collegio / Members of the Panel:

Elena Baliello (ITA)

Annalisa Ronchetti (ITA)

NOTIFICAZIONE AL CONCORRENTE / NOTIFICATION TO THE RELEVANT ENTRANT

Io sottoscritto:

I undersigned: Nome Cognome / personal name

Rappresentante del Concorrente: **GRESSANI GIANNI**

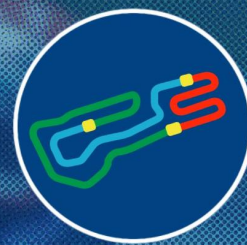
Representing the Entrant: Nome del Concorrente / Entrant's name

Certifico che sono stato informato del documento No. **22** dai Commissari Sportivi dell'Evento.
Certify that I have been notified of document No. **22** *by the Stewards of the Meeting.*

Data / Date:

Ora / Time:

Firma / Signature:



KA100

Prefinale
Lap Chart

For information purposes. No official / regulatory value

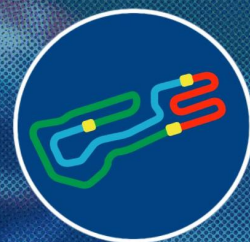
	1	2	3	4	5	6	7	8	9	10	11	12	13	14
Grid	804	805	830	820	800	850	808	823	821	802	855	827	807	854
Start	804	830	805	800	820	850	808	823	821	855	802	807	827	854
Lap 1 <small>Interval</small>	804 0.6	830 0.0	805 0.4	820 0.7	800 0.6	808 0.1	821 0.3	823 0.0	802 0.3	807 0.3	855 0.1	827 0.6	854 0.7	850 0.7
Lap 2	804 1.0	805 0.3	830 0.0	820 1.0	800 0.4	808 0.2	821 0.1	823 0.2	802 0.4	807 0.9	855 0.1	827 1.0	850 0.8	854 0.8
Lap 3	804 0.8	805 1.7	830 0.0	820 0.6	800 0.3	808 0.2	821 0.4	823 0.1	802 0.4	807 1.1	827 0.2	855 0.3	850 2.5	854 2.5
Lap 4	804 0.8	805 2.9	830 0.0	820 0.2	800 0.4	808 0.2	821 0.2	823 0.2	802 0.6	807 1.2	827 0.5	855 0.3	850 4.0	854 4.0
Lap 5	804 0.6	805 3.7	830 0.3	820 0.3	800 0.7	808 0.2	821 0.1	823 0.1	802 0.2	807 1.2	827 0.1	855 0.3	850 5.5	854 5.5
Lap 6	804 0.6	805 4.1	830 0.4	820 0.5	800 0.5	808 0.7	802 0.4	821 0.2	823 0.3	807 1.1	827 0.2	855 0.5	850 6.8	854 6.8
Lap 7	804 0.5	805 4.6	830 0.4	820 0.4	800 0.8	808 0.6	802 1.1	821 0.4	823 0.1	807 0.7	827 0.2	855 0.7	850 7.8	854 7.8
Lap 8	804 0.3	805 5.0	830 0.4	820 0.4	800 0.9	808 0.4	802 1.8	821 0.2	823 0.4	807 0.3	827 0.3	855 1.2	850 9.2	854 9.2
Lap 9	804 0.2	805 5.3	830 0.4	820 0.5	800 1.1	808 0.2	802 2.3	821 0.0	823 0.8	807 0.0	827 0.1	855 2.0	850 9.9	854 9.9
Lap 10	805 0.0	804 5.5	830 0.6	820 0.5	800 1.6	808 0.1	802 1.9	821 0.4	823 1.1	807 0.4	827 1.1	855 0.8	850 11.0	854 11.0
Lap 11	804 0.2	805 4.7	830 0.8	820 0.5	800 1.7	808 0.1	802 1.7	821 0.5	823 1.5	807 0.2	827 1.2	855 1.4	850 11.9	854 11.9
Lap 12	804 0.4	805 3.7	830 1.0	820 0.5	800 1.9	808 0.2	802 1.3	821 0.8	823 2.1	807 0.3	827 0.8	855 1.5	850 13.3	854 13.3
Lap 13	804 0.6	805 3.5	830 1.3	820 0.5	800 2.1	808 0.1	802 0.9	821 1.3	823 2.2	807 0.3	827 0.6	855 1.9	850 14.7	854 14.7
Lap 14	804 0.4	805 3.9	830 1.3	820 0.5	800 2.3	808 0.4	802 0.6	821 1.5	823 2.7	807 0.2	827 0.3	855 2.3	850 16.1	854 16.1

Direttore di Gara



IAME SERIES ITALY RND8 - LONATO (BS) (Italy) 09-10/09/2023

LSTiming



KA100

Prefinale
Analysis

For information purposes. No official / regulatory value

Laps	Sector 1	Sector 2	Sector 3	Lap Time	Laps	Sector 1	Sector 2	Sector 3	Lap Time	Laps	Sector 1	Sector 2	Sector 3	Lap Time
No.800 BATTINI ALESSANDRO					No.805 COCOZZA ALESSANDRO					No.820 DONCHI SIMONE				
1	22.469	16.908	15.659	55.036	1	21.755	16.362	15.706	53.823	1	22.172	16.424	15.586	54.182
2	21.098	16.366	15.462	52.926	2	21.094	16.113	15.454	52.661	2	20.794	16.205	15.622	52.621
3	20.775	16.337	15.493	52.605	3	20.572	16.016	15.085	51.673	3	20.676	16.512	15.792	52.980
4	20.601	16.343	15.423	52.367	4	20.460	15.985	15.091	51.536	4	20.888	16.471	15.487	52.846
5	21.082	16.202	15.236	52.520	5	20.407	15.874	15.064	51.345	5	20.877	16.162	15.325	52.364
6	20.621	16.150	15.404	52.175	6	20.520	15.941	15.039	51.500	6	20.510	16.169	15.355	52.034
7	20.502	16.081	15.168	51.751	7	20.392	15.897	15.067	51.356	7	20.539	16.062	15.253	51.854
8	20.658	16.044	15.201	51.903	8	20.446	15.855	15.107	51.408	8	20.560	16.067	15.212	51.839
9	20.484	16.055	15.141	51.680	9	20.377	15.850	15.125	51.352	9	20.469	15.939	15.212	51.620
10	20.525	16.022	15.201	51.748	10	20.289	15.868	15.214	51.371	10	20.460	16.062	15.240	51.762
11	20.676	16.105	15.192	51.973	11	20.796	15.953	15.747	52.496	11	20.511	16.063	15.329	51.903
12	20.512	16.107	15.302	51.921	12	20.583	15.942	16.251	52.776	12	20.574	16.112	15.324	52.010
13	20.522	16.141	15.368	52.031	13	20.789	15.999	15.123	51.911	13	20.602	16.118	15.246	51.966
14	20.568	16.151	15.130	51.849	14	20.368	15.921	15.143	51.432	14	20.546	16.093	15.268	51.907
No.802 GRESSANI BRUNO					No.807 DE MARIA NICHOLAS					No.821 MONDIN PIETRO				
1	22.270	17.338	16.017	55.625	1	23.105	16.839	15.828	55.772	1	22.678	17.005	15.745	55.428
2	20.918	16.356	15.386	52.660	2	20.852	16.325	15.578	52.755	2	20.869	16.365	15.514	52.748
3	20.732	16.204	15.815	52.751	3	20.829	16.339	15.555	52.723	3	20.684	16.348	15.481	52.513
4	20.667	16.263	15.337	52.267	4	20.700	16.202	15.502	52.404	4	20.601	16.221	15.662	52.484
5	21.061	16.610	15.275	52.946	5	20.750	16.684	15.500	52.934	5	21.023	16.870	15.674	53.567
6	20.520	16.200	15.208	51.928	6	20.560	16.469	15.367	52.396	6	20.673	16.184	15.344	52.201
7	20.590	16.151	15.269	52.010	7	20.729	16.332	15.703	52.764	7	20.990	16.266	15.463	52.719
8	20.573	16.064	15.128	51.765	8	20.744	16.193	15.565	52.502	8	20.781	16.195	15.446	52.422
9	20.527	16.048	15.129	51.704	9	20.637	16.229	15.581	52.447	9	20.647	16.119	15.534	52.300
10	20.502	16.141	15.506	52.149	10	20.788	16.169	15.448	52.405	10	20.720	16.168	15.227	52.115
11	20.577	16.215	15.292	52.084	11	20.845	16.152	15.399	52.396	11	20.534	16.114	15.314	51.962
12	20.665	16.153	15.325	52.143	12	20.697	16.232	16.082	53.011	12	20.555	16.177	15.306	52.038
13	20.547	16.112	15.341	52.000	13	20.625	16.236	15.474	52.335	13	20.821	16.179	15.287	52.287
14	20.674	16.179	15.201	52.054	14	20.685	16.271	15.550	52.506	14	20.687	16.175	15.278	52.140
No.804 MELIS MATTEO					No.808 GOTTI THOMAS					No.823 SANTAROSSA NICHOLAS				
1	21.720	16.500	15.507	53.727	1	22.377	17.158	15.779	55.314	1	23.116	17.131	15.613	55.860
2	20.751	16.225	15.287	52.263	2	20.849	16.309	15.541	52.699	2	20.696	16.451	15.376	52.523
3	20.599	16.115	15.195	51.909	3	20.727	16.329	15.462	52.518	3	20.728	16.316	15.766	52.810
4	20.453	15.982	15.107	51.542	4	20.588	16.236	15.631	52.455	4	20.573	16.264	15.392	52.229
5	20.460	15.949	15.111	51.520	5	21.201	16.333	15.299	52.833	5	21.376	16.678	15.421	53.475
6	20.484	15.965	15.111	51.560	6	20.499	16.136	15.371	52.006	6	20.711	16.357	15.232	52.300
7	20.405	15.893	15.162	51.460	7	20.527	16.175	15.379	52.081	7	20.900	16.332	15.771	53.003
8	20.434	15.941	15.173	51.548	8	20.550	16.050	15.336	51.936	8	20.637	16.235	15.259	52.131
9	20.435	15.902	15.109	51.446	9	20.491	16.107	15.296	51.894	9	20.674	16.165	15.179	52.018
10	20.327	15.894	15.492	51.713	10	20.565	16.163	15.523	52.251	10	20.553	16.086	15.127	51.766
11	20.528	16.037	15.582	52.147	11	20.615	16.135	15.367	52.117	11	20.542	16.147	15.118	51.807
12	20.642	16.005	15.939	52.586	12	20.581	16.146	15.331	52.058	12	20.560	16.065	15.169	51.794
13	20.614	16.037	15.136	51.787	13	20.569	16.152	15.667	52.388	13	20.544	16.188	15.050	51.782
14	20.467	16.038	15.076	51.581	14	20.740	16.284	15.298	52.322	14	20.524	16.130	15.279	51.933

Direttore di Gara



IAME SERIES ITALY RND8 - LONATO (BS) (Italy) 09-10/09/2023

LSTiming



KA100

Prefinale
Analysis

For information purposes. No official / regulatory value

Laps Sector 1 Sector 2 Sector 3 Lap Time Laps Sector 1 Sector 2 Sector 3 Lap Time

No.827 ARMENTO GIANLUCA

1	23.155	17.078	15.868	56.101
2	21.219	16.700	15.417	53.336
3	21.096	16.297	15.439	52.832
4	20.865	16.311	15.356	52.532
5	20.957	16.325	15.744	53.026
6	20.834	16.240	15.325	52.399
7	20.689	16.269	15.431	52.389
8	20.639	16.117	15.244	52.000
9	20.630	16.118	15.328	52.076
10	21.837	16.544	15.510	53.891
11	20.794	16.184	15.342	52.320
12	20.804	16.205	15.282	52.291
13	20.884	16.166	15.124	52.174
14	20.747	16.244	15.211	52.202

No.854 GERMANO VIOLA

1	23.066	17.242	16.065	56.373
2	21.573	17.100	15.843	54.516
3	21.543	16.765	15.787	54.095
4	21.508	17.019	15.832	54.359
5	21.505	16.879	15.638	54.022
6	21.419	16.778	15.639	53.836
7	21.382	16.656	15.654	53.692
8	21.334	16.789	15.733	53.856
9	21.359	16.621	15.628	53.608
10	21.452	16.604	15.675	53.731
11	21.389	16.685	15.770	53.844
12	21.458	16.617	15.715	53.790
13	21.417	16.884	15.700	54.001
14	21.473	16.837	15.632	53.942

No.830 TSENG EASON

1	21.773	16.546	15.911	54.230
2	20.889	16.189	15.941	53.019
3	20.765	16.330	15.963	53.058
4	20.851	16.418	15.543	52.812
5	20.680	16.072	15.314	52.066
6	20.596	16.082	15.283	51.961
7	20.516	16.018	15.263	51.797
8	20.567	15.974	15.269	51.810
9	20.474	15.990	15.172	51.636
10	20.455	15.999	15.171	51.625
11	20.473	16.045	15.180	51.698
12	20.596	15.985	15.174	51.755
13	20.549	16.009	15.125	51.683
14	20.557	16.074	15.278	51.909

No.855 FURLAN MATTIA

1	23.578	17.035	15.868	56.481
2	21.276	16.530	15.590	53.396
3	20.952	16.338	15.882	53.172
4	20.925	16.764	15.421	53.110
5	20.677	16.369	15.491	52.537
6	20.756	16.346	15.491	52.593
7	20.750	16.300	15.568	52.618
8	20.795	16.351	15.366	52.512
9	20.893	16.392	15.600	52.885
10	20.966	16.287	15.435	52.688
11	20.864	16.670	15.352	52.886
12	20.825	16.262	15.331	52.418
13	20.987	16.316	15.288	52.591
14	20.754	16.375	15.423	52.552

No.850 GERVASI ERIC

1	22.340	20.237	15.759	58.336
2	20.935	16.514	15.461	52.910
3	20.727	16.155	15.489	52.371
4	20.710	16.454	15.342	52.506
5	20.777	16.150	15.469	52.396
6	20.820	16.064	15.386	52.270
7	20.743	16.215	15.418	52.376
8	20.641	16.082	15.370	52.093
9	20.569	16.103	15.449	52.121
10	21.338	16.066	15.408	52.812
11	20.721	16.162	15.376	52.259
12	20.635	16.113	15.591	52.339
13	20.798	16.135	15.404	52.337
14	20.790	16.412	15.475	52.677

Direttore di Gara



IAME SERIES ITALY RND8 - LONATO (BS) (Italy) 09-10/09/2023

LSTiming

Page 2 / 2

Apex Timing GoRacing



KA100

Prefinale
Starting Grid

854	GERMANO VIOLA IPK - PRAGA / IAME / KOMET		7	807	DE MARIA NICHOLAS WILD KART / IAME / KOMET	
827	ARMENTO GIANLUCA IPK - OK1 / IAME / KOMET		6	855	FURLAN MATTIA WILD KART / IAME / KOMET	
802	GRESSANI BRUNO IPK - OK1 / IAME / KOMET		5	821	MONDIN PIETRO PAROLIN / IAME / KOMET	
823	SANTAROSSA NICHOLAS WILD KART / IAME / KOMET		4	808	GOTTI THOMAS WILD KART / IAME / KOMET	
850	GERVASI ERIC IPK - OK1 / IAME / KOMET		3	800	BATTINI ALESSANDRO IPK - OK1 / IAME / KOMET	
820	DONCHI SIMONE TONY KART / IAME / KOMET		2	830	TSENG EASON TBKART / IAME / KOMET	
805	COCOZZA ALESSANDRO TONY KART / IAME / KOMET		1	804	MELIS MATTEO TBKART / IAME / KOMET	

POLE POSITION



Start : 10/09 - 14:15 14 Laps = 16.800 km

Pres. del Collegio



Comm. del Collegio

Anna Scholte

Comm. del Collegio

Annalisa Raudolfi

IAME SERIES ITALY RND8 - LONATO (BS) (Italy) 09-10/09/2023

Page 1 / 1

LSTiming

Apex Timing GoRacing



KA100

Prove Cronometrate
OFFICIAL RESULTS

Document 3.1 OFFICIAL

Rnk	No.	Entrant	Nation.	Driver	Nation	Equipment	Sector 1	Sector 2	Sector 3	Time	Gap	Laps
1	804	TBKART RACING TEAM SRL	ITA	MELIS MATTEO	ITA	TBKART / IAME / KOMET	20.348	15.933	15.116	51.397		6
2	805	COCOZZA ARGENTINO	ITA	COCOZZA ALESSANDRO	ITA	TONY KART / IAME / KOMET	20.514	15.976	15.066	51.556	0.159	7
3	830	TBKART RACING TEAM SRL	ITA	TSENG EASON	TWN	TBKART / IAME / KOMET	20.408	15.982	15.233	51.623	0.226	6
4	820	ZANINI MIRIAM	ITA	DONCHI SIMONE	ITA	TONY KART / IAME / KOMET	20.615	16.123	15.133	51.871	0.474	6
5	800	BATTINI FRANCO	ITA	BATTINI ALESSANDRO	ITA	IPK - OK1 / IAME / KOMET	20.635	16.123	15.269	52.027	0.630	6
6	850	GERVASI MAURO	ITA	GERVASI ERIC	ITA	IPK - OK1 / IAME / KOMET	20.709	16.135	15.250	52.094	0.697	6
7	808	GOTTI CLAUDIO	ITA	GOTTI THOMAS	ITA	WILD KART / IAME / KOMET	20.686	16.180	15.388	52.254	0.857	6
8	823	SANTAROSSA OMAR	ITA	SANTAROSSA NICHOLA	ITA	WILD KART / IAME / KOMET	20.651	16.271	15.362	52.284	0.887	6
9	821	MONDIN STEFANO	ITA	MONDIN PIETRO	ITA	PAROLIN / IAME / KOMET	20.670	16.172	15.457	52.299	0.902	6
10	802	GRESSANI GIANNI	ITA	GRESSANI BRUNO	ITA	IPK - OK1 / IAME / KOMET	20.723	16.319	15.297	52.339	0.942	6
11	855	FURLAN MARCO	ITA	FURLAN MATTIA	ITA	WILD KART / IAME / KOMET	20.794	16.202	15.394	52.390	0.993	6
12	827	ARMENTO MICHELE	ITA	ARMENTO GIANLUCA	ITA	IPK - OK1 / IAME / KOMET	21.039	16.143	15.337	52.519	1.122	6
13	807	DE MARIA SALVATORE	ITA	DE MARIA NICHOLAS	ITA	WILD KART / IAME / KOMET	20.671	16.134	15.715	52.520	1.123	6
14	854	J TEAM A.S.D.	ITA	GERMANO VIOLA	ITA	IPK - PRAGA / IAME / KOMET	21.446	16.699	15.616	53.761	2.364	6

Start Time : 10/09 - 12:17:14 / Flag Time : 12:23:15 / End Time : 12:24:06

Best lap : No.804 MELIS MATTEO

51.397

84.05 kph

Weather : Sunny

Air : 27°C

Track : Dry

Pres. del Collegio



Comm. del Collegio

Anna Scholte

Comm. del Collegio

Annalisa Raudelli

IAME SERIES ITALY RND8 - LONATO (BS) (Italy) 09-10/09/2023

Page 1 / 2

LSTiming

Apex Timing GoRacing





KA100

Prove Cronometrate
OFFICIAL RESULTS

Document 3.1 OFFICIAL

Rnk	No.	Entrant	Nation.	Driver	Nation	Equipment	Sector 1	Sector 2	Sector 3	Time	Gap	Laps
KA100 Jr												
1	804	TBKART RACING TEAM SRL	ITA	MELIS MATTEO	ITA	TBKART / IAME / KOMET	20.348	15.933	15.116	51.397		6
2	805	COCOZZA ARGENTINO	ITA	COCOZZA ALESSANDRO	ITA	TONY KART / IAME / KOMET	20.514	15.976	15.066	51.556	0.159	7
3	830	TBKART RACING TEAM SRL	ITA	TSENG EASON	TWN	TBKART / IAME / KOMET	20.408	15.982	15.233	51.623	0.226	6
4	820	ZANINI MIRIAM	ITA	DONCHI SIMONE	ITA	TONY KART / IAME / KOMET	20.615	16.123	15.133	51.871	0.474	6
5	800	BATTINI FRANCO	ITA	BATTINI ALESSANDRO	ITA	IPK - OK1 / IAME / KOMET	20.635	16.123	15.269	52.027	0.630	6
6	808	GOTTI CLAUDIO	ITA	GOTTI THOMAS	ITA	WILD KART / IAME / KOMET	20.686	16.180	15.388	52.254	0.857	6
7	823	SANTAROSSA OMAR	ITA	SANTAROSSA NICHOLA	ITA	WILD KART / IAME / KOMET	20.651	16.271	15.362	52.284	0.887	6
8	821	MONDIN STEFANO	ITA	MONDIN PIETRO	ITA	PAROLIN / IAME / KOMET	20.670	16.172	15.457	52.299	0.902	6
9	802	GRESSANI GIANNI	ITA	GRESSANI BRUNO	ITA	IPK - OK1 / IAME / KOMET	20.723	16.319	15.297	52.339	0.942	6
10	827	ARMENTO MICHELE	ITA	ARMENTO GIANLUCA	ITA	IPK - OK1 / IAME / KOMET	21.039	16.143	15.337	52.519	1.122	6
11	807	DE MARIA SALVATORE	ITA	DE MARIA NICHOLAS	ITA	WILD KART / IAME / KOMET	20.671	16.134	15.715	52.520	1.123	6

KA100 Sr												
1	850	GERVASI MAURO	ITA	GERVASI ERIC	ITA	IPK - OK1 / IAME / KOMET	20.709	16.135	15.250	52.094		6
2	855	FURLAN MARCO	ITA	FURLAN MATTIA	ITA	WILD KART / IAME / KOMET	20.794	16.202	15.394	52.390	0.296	6
3	854	J TEAM A.S.D.	ITA	GERMANO VIOLA	ITA	IPK - PRAGA / IAME / KOMET	21.446	16.699	15.616	53.761	1.667	6

Start Time : 10/09 - 12:17:14 / Flag Time : 12:23:15 / End Time : 12:24:06

Best lap : No.804 MELIS MATTEO

51.397

84.05 kph

Weather : Sunny

Air : 27°C

Track : Dry

Pres. del Collegio



Comm. del Collegio

Anna Scholte

Comm. del Collegio

Annalisa Raudelli

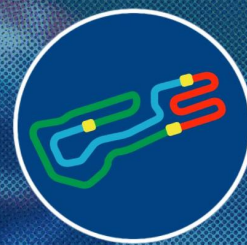
IAME SERIES ITALY RND8 - LONATO (BS) (Italy) 09-10/09/2023

Page 2 / 2

LSTiming

Apex Timing GoRacing





KA100

Prove Cronometrate
Best Sectors Analysis

For information purposes. No official / regulatory value

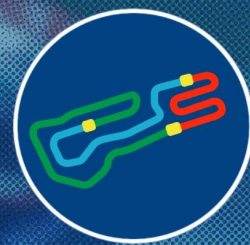
S1			S2			S3			Ideal Lap Times						
Rnk	No.	Time	Rnk	No.	Time	Rnk	No.	Time	Rnk	No.	Driver	Nation	Ideal Lap	Best Lap	Diff.
1	804	20.332	1	804	15.933	1	805	15.066	1	804	MELIS MATTEO	ITA	51.381	51.397	0.016
2	830	20.408	2	805	15.949	2	804	15.116	2	805	COCOZZA ALESSANDRO	ITA	51.529	51.556	0.027
3	805	20.514	3	830	15.982	3	820	15.133	3	830	TSENG EASON	TWN	51.620	51.623	0.003
4	820	20.615	4	850	16.092	4	830	15.230	4	820	DONCHI SIMONE	ITA	51.871	51.871	
5	800	20.635	5	820	16.123	5	850	15.250	5	850	GERVASI ERIC	ITA	52.022	52.094	0.072
6	823	20.651	5	800	16.123	6	823	15.260	6	800	BATTINI ALESSANDRO	ITA	52.027	52.027	
7	821	20.670	7	807	16.134	7	800	15.269	7	823	SANTAROSSA NICHOLAS	ITA	52.182	52.284	0.102
8	807	20.671	8	827	16.143	8	802	15.297	8	807	DE MARIA NICHOLAS	ITA	52.229	52.520	0.291
9	850	20.680	9	821	16.172	9	827	15.316	8	802	GRESSANI BRUNO	ITA	52.229	52.339	0.110
10	808	20.686	10	808	16.180	10	855	15.362	10	808	GOTTI THOMAS	ITA	52.254	52.254	
11	802	20.723	11	855	16.202	11	808	15.388	11	827	ARMENTO GIANLUCA	ITA	52.267	52.519	0.252
12	855	20.794	12	802	16.209	12	807	15.424	12	821	MONDIN PIETRO	ITA	52.286	52.299	0.013
13	827	20.808	13	823	16.271	13	821	15.444	13	855	FURLAN MATTIA	ITA	52.358	52.390	0.032
14	854	21.446	14	854	16.699	14	854	15.616	14	854	GERMANO VIOLA	ITA	53.761	53.761	

Direttore di Gara



IAME SERIES ITALY RND8 - LONATO (BS) (Italy) 09-10/09/2023

LSTiming



KA100

Prove Cronometrate
Analysis

For information purposes. No official / regulatory value

Laps	Sector 1	Sector 2	Sector 3	Lap Time	Spd
No.800 BATTINI ALESSANDRO					
1	23.636	18.296	16.368	58.300	87
2	21.519	16.562	15.750	53.831	87
3	20.970	16.369	15.405	52.744	87
4	20.750	16.150	15.350	52.250	88
5	20.907	19.833	15.430	56.170	88
6	20.635	16.123	15.269	52.027	87

Laps	Sector 1	Sector 2	Sector 3	Lap Time	Spd
No.802 GRESSANI BRUNO					
1	22.817	20.584	16.662	1:00.063	85
2	21.465	16.914	15.750	54.129	85
3	21.150	16.586	15.575	53.311	86
4	21.182	16.348	15.348	52.878	87
5	20.762	16.209	15.416	52.387	86
6	20.723	16.319	15.297	52.339	86

Laps	Sector 1	Sector 2	Sector 3	Lap Time	Spd
No.804 MELIS MATTEO					
1	21.785	16.840	15.787	54.412	86
2	20.971	16.383	15.429	52.783	85
3	20.642	16.099	15.192	51.933	86
4	20.398	15.967	15.202	51.567	87
5	20.348	15.933	15.116	51.397	87
6	20.332	15.962	15.142	51.436	86

Laps	Sector 1	Sector 2	Sector 3	Lap Time	Spd
No.805 COCOZZA ALESSANDRO					
1	21.716	16.652	15.533	53.901	86
2	21.014	16.255	15.329	52.598	86
3	20.768	16.086	15.177	52.031	86
4	20.562	16.057	15.136	51.755	86
5	20.542	15.949	15.204	51.695	86
6	20.514	15.976	15.066	51.556	86
7	20.642	15.983	15.119	51.744	85

Laps	Sector 1	Sector 2	Sector 3	Lap Time	Spd
No.807 DE MARIA NICHOLAS					
1	27.049	17.475	16.047	1:00.571	86
2	21.264	16.403	15.583	53.250	86
3	20.867	16.325	15.648	52.840	85
4	20.752	16.192	15.593	52.537	86
5	20.671	16.134	15.715	52.520	74
6	21.152	16.179	15.424	52.755	87

Laps	Sector 1	Sector 2	Sector 3	Lap Time	Spd
No.808 GOTTI THOMAS					
1	21.764	16.893	15.792	54.449	86
2	21.067	16.450	15.579	53.096	86
3	20.927	16.238	15.485	52.650	85
4	20.732	16.213	15.397	52.342	85
5	20.740	16.259	15.404	52.403	85
6	20.686	16.180	15.388	52.254	85

Laps	Sector 1	Sector 2	Sector 3	Lap Time	Spd
No.820 DONCHI SIMONE					
1	22.351	17.043	15.948	55.342	86
2	21.257	16.422	15.609	53.288	87
3	20.978	16.238	15.396	52.612	87

Laps	Sector 1	Sector 2	Sector 3	Lap Time	Spd
4	20.847	16.198	15.295	52.340	86
5	20.690	16.123	15.289	52.102	86
6	20.615	16.123	15.133	51.871	87
No.821 MONDIN PIETRO					
1	22.399	17.051	15.971	55.421	84
2	21.450	16.360	15.738	53.548	86
3	20.983	16.272	15.630	52.885	85
4	20.911	16.275	15.532	52.718	85
5	21.950	16.367	15.444	53.761	86
6	20.670	16.172	15.457	52.299	86

Laps	Sector 1	Sector 2	Sector 3	Lap Time	Spd
No.823 SANTAROSSA NICHOLAS					
1	23.939	21.042	16.631	1:01.612	81
2	21.941	20.560	17.219	59.720	86
3	21.019	16.416	15.415	52.850	86
4	20.651	16.271	15.362	52.284	87
5	20.755	16.303	15.260	52.318	85
6	20.730	16.290	15.290	52.310	85

Laps	Sector 1	Sector 2	Sector 3	Lap Time	Spd
No.827 ARMENTO GIANLUCA					
1	24.024	18.595	16.205	58.824	86
2	21.544	16.625	15.586	53.755	87
3	21.139	16.273	15.316	52.728	87
4	21.039	16.143	15.337	52.519	86
5	20.808	16.396	15.370	52.574	87
6	20.902	16.199	15.616	52.717	86

Laps	Sector 1	Sector 2	Sector 3	Lap Time	Spd
No.830 TSENG EASON					
1	22.527	16.968	15.946	55.441	86
2	21.078	16.367	15.514	52.959	86
3	20.664	16.210	15.361	52.235	85
4	20.574	16.032	15.230	51.836	86
5	20.536	16.077	15.305	51.918	86
6	20.408	15.982	15.233	51.623	86

Laps	Sector 1	Sector 2	Sector 3	Lap Time	Spd
No.850 GERVASI ERIC					
1	26.488	17.004	15.879	59.371	85
2	21.076	16.337	15.468	52.881	85
3	20.898	18.025	15.495	54.418	85
4	20.800	16.298	15.478	52.576	84
5	20.709	16.135	15.250	52.094	85
6	20.680	16.092	15.328	52.100	84

Laps	Sector 1	Sector 2	Sector 3	Lap Time	Spd
No.854 GERMANO VIOLA					
1	23.434	18.297	16.447	58.178	81
2	22.141	17.116	16.372	55.629	83
3	21.648	16.749	15.695	54.092	83
4	21.507	16.764	15.894	54.165	84
5	21.446	16.699	15.616	53.761	82
6	21.491	16.817	16.287	54.595	82

Laps	Sector 1	Sector 2	Sector 3	Lap Time	Spd
No.855 FURLAN MATTIA					
1	21.963	20.018	15.834	57.815	84



KA100

Prove libere Ufficiali
Results

Document 2

For information purposes. No official / regulatory value

Rnk	No.	Entrant	Nation.	Driver	Nation	Equipment	Sector 1	Sector 2	Sector 3	Time	Gap	Laps
1	805	COCOZZA ARGENTINO	ITA	ALESSANDRO COCOZZA	ITA	TONY KART / IAME / KOMET	20.582	15.861	15.063	51.506		10
2	800	BATTINI FRANCO	ITA	ALESSANDRO BATTINI	ITA	IPK - OK1 / IAME / KOMET	20.722	16.022	15.360	52.104	0.598	10
3	820	ZANINI MIRIAM	ITA	SIMONE DONCHI	ITA	TONY KART / IAME / KOMET	20.700	16.091	15.376	52.167	0.661	10
4	821	MONDIN STEFANO	ITA	PIETRO MONDIN	ITA	PAROLIN / IAME / KOMET	20.621	16.057	15.497	52.175	0.669	10
5	850	GERVASI MAURO	ITA	ERIC GERVASI	ITA	IPK - OK1 / IAME / KOMET	20.762	16.041	15.385	52.188	0.682	10
6	808	GOTTI CLAUDIO	ITA	THOMAS GOTTI	ITA	WILD KART / IAME / KOMET	20.652	16.142	15.410	52.204	0.698	6
7	802	GRESSANI GIANNI	ITA	BRUNO GRESSANI	ITA	IPK - OK1 / IAME / KOMET	20.822	16.199	15.327	52.348	0.842	10
8	807	DE MARIA SALVATORE	ITA	NICHOLAS DE MARIA	ITA	WILD KART / IAME / KOMET	20.958	16.187	15.536	52.681	1.175	9
9	827	ARMENTO MICHELE	ITA	GIANLUCA ARMENTO	ITA	IPK - OK1 / IAME / KOMET	21.057	16.189	15.598	52.844	1.338	10
10	855	FURLAN MARCO	ITA	MATTIA FURLAN	ITA	WILD KART / IAME / KOMET	21.037	16.355	15.589	52.981	1.475	10
11	823	SANTAROSSA OMAR	ITA	NICHOLAS SANTAROSSA	ITA	WILD KART / IAME / KOMET	21.045	16.524	15.648	53.217	1.711	9
12	854	J TEAM A.S.D.	ITA	VIOLA GERMANO	ITA	IPK - PRAGA / IAME / KOMET	21.596	16.688	15.907	54.191	2.685	9
13	830	TBKART RACING TEAM SRL	ITA	EASON TSENG	TWN	TBKART / IAME / KOMET	21.814	16.702	15.892	54.408	2.902	1
14	804	TBKART RACING TEAM SRL	ITA	MATTEO MELIS	ITA	TBKART / IAME / KOMET	21.931	16.818	16.084	54.833	3.327	1

Start Time : 10/09 - 10:39:26 / Flag Time : 10:49:27 / End Time : 10:50:16

Best lap : No.805 ALESSANDRO COCOZZA 51.506 83.87 kph

Weather : Sunny Air : 26°C Track : Dry

Direttore di Gara



IAME SERIES ITALY RND8 - LONATO (BS) (Italy) 09-10/09/2023

Page 1 / 2

LSTiming

Apex Timing GoRacing





KA100

Prove libere Ufficiali
Results

Document 2

For information purposes. No official / regulatory value

Rnk	No.	Entrant	Nation.	Driver	Nation	Equipment	Sector 1	Sector 2	Sector 3	Time	Gap	Laps
KA100 Jr												
1	805	COCOZZA ARGENTINO	ITA	ALESSANDRO COCOZZA	ITA	TONY KART / IAME / KOMET	20.582	15.861	15.063	51.506		10
2	800	BATTINI FRANCO	ITA	ALESSANDRO BATTINI	ITA	IPK - OK1 / IAME / KOMET	20.722	16.022	15.360	52.104	0.598	10
3	820	ZANINI MIRIAM	ITA	SIMONE DONCHI	ITA	TONY KART / IAME / KOMET	20.700	16.091	15.376	52.167	0.661	10
4	821	MONDIN STEFANO	ITA	PIETRO MONDIN	ITA	PAROLIN / IAME / KOMET	20.621	16.057	15.497	52.175	0.669	10
5	808	GOTTI CLAUDIO	ITA	THOMAS GOTTI	ITA	WILD KART / IAME / KOMET	20.652	16.142	15.410	52.204	0.698	6
6	802	GRESSANI GIANNI	ITA	BRUNO GRESSANI	ITA	IPK - OK1 / IAME / KOMET	20.822	16.199	15.327	52.348	0.842	10
7	807	DE MARIA SALVATORE	ITA	NICHOLAS DE MARIA	ITA	WILD KART / IAME / KOMET	20.958	16.187	15.536	52.681	1.175	9
8	827	ARMENTO MICHELE	ITA	GIANLUCA ARMENTO	ITA	IPK - OK1 / IAME / KOMET	21.057	16.189	15.598	52.844	1.338	10
9	823	SANTAROSSA OMAR	ITA	NICHOLAS SANTAROSSA	ITA	WILD KART / IAME / KOMET	21.045	16.524	15.648	53.217	1.711	9
10	830	TBKART RACING TEAM SRL	ITA	EASON TSENG	TWN	TBKART / IAME / KOMET	21.814	16.702	15.892	54.408	2.902	1
11	804	TBKART RACING TEAM SRL	ITA	MATTEO MELIS	ITA	TBKART / IAME / KOMET	21.931	16.818	16.084	54.833	3.327	1

KA100 Sr

1	850	GERVASI MAURO	ITA	ERIC GERVASI	ITA	IPK - OK1 / IAME / KOMET	20.762	16.041	15.385	52.188		10
2	855	FURLAN MARCO	ITA	MATTIA FURLAN	ITA	WILD KART / IAME / KOMET	21.037	16.355	15.589	52.981	0.793	10
3	854	J TEAM A.S.D.	ITA	VIOLA GERMANO	ITA	IPK - PRAGA / IAME / KOMET	21.596	16.688	15.907	54.191	2.003	9

Start Time : 10/09 - 10:39:26 / Flag Time : 10:49:27 / End Time : 10:50:16

Best lap : No.805 ALESSANDRO COCOZZA

51.506

83.87 kph

Weather : Sunny Air : 26°C Track : Dry

Direttore di Gara



IAME SERIES ITALY RND8 - LONATO (BS) (Italy) 09-10/09/2023

Page 2 / 2

LSTiming

Apex Timing GoRacing



KA100

Prove libere Ufficiali
Best Sectors Analysis

For information purposes. No official / regulatory value

S1			S2			S3			Ideal Lap Times						
Rnk	No.	Time	Rnk	No.	Time	Rnk	No.	Time	Rnk	No.	Driver	Nation	Ideal Lap	Best Lap	Diff.
1	805	20.582	1	805	15.820	1	805	15.063	1	805	COCOZZA ALESSANDRO	ITA	51.465	51.506	0.041
2	821	20.621	2	800	15.975	2	802	15.327	2	800	BATTINI ALESSANDRO	ITA	52.036	52.104	0.068
3	850	20.644	3	850	16.041	3	800	15.339	3	850	GERVASI ERIC	ITA	52.060	52.188	0.128
4	808	20.652	4	821	16.057	4	850	15.375	4	820	DONCHI SIMONE	ITA	52.143	52.167	0.024
5	820	20.676	5	820	16.091	5	820	15.376	5	821	MONDIN PIETRO	ITA	52.150	52.175	0.025
6	802	20.719	6	808	16.136	6	808	15.410	6	802	GRESSANI BRUNO	ITA	52.192	52.348	0.156
7	800	20.722	7	802	16.146	7	821	15.472	7	808	GOTTI THOMAS	ITA	52.198	52.204	0.006
8	807	20.958	8	807	16.187	8	807	15.536	8	807	DE MARIA NICHOLAS	ITA	52.681	52.681	
9	855	21.037	9	827	16.189	9	855	15.548	9	827	ARMENTO GIANLUCA	ITA	52.832	52.844	0.012
10	823	21.045	10	855	16.355	10	827	15.586	10	855	FURLAN MATTIA	ITA	52.940	52.981	0.041
11	827	21.057	11	823	16.460	11	823	15.624	11	823	SANTAROSSA NICHOLAS	ITA	53.129	53.217	0.088
12	854	21.460	12	854	16.688	12	830	15.892	12	854	GERMANO VIOLA	ITA	54.055	54.191	0.136
13	830	21.814	13	830	16.702	13	854	15.907	13	830	TSENG EASON	TWN	54.408	54.408	
14	804	21.931	14	804	16.818	14	804	16.084	14	804	MELIS MATTEO	ITA	54.833	54.833	

Direttore di Gara



IAME SERIES ITALY RND8 - LONATO (BS) (Italy) 09-10/09/2023

LSTiming



KA100

Prove libere Ufficiali
Analysis

For information purposes. No official / regulatory value

Laps	Sector 1	Sector 2	Sector 3	Lap Time	Spd	Laps	Sector 1	Sector 2	Sector 3	Lap Time	Spd	Laps	Sector 1	Sector 2	Sector 3	Lap Time	Spd
No.800 BATTINI ALESSANDRO																	
1	23.255	17.186	16.162	56.603	87	2	21.145	16.429	15.687	53.261	84	10	21.211	16.354	15.665	53.230	85
2	21.396	16.694	15.886	53.976	86	3	20.829	16.360	15.566	52.755	84	No.830 TSENG EASON					
3	21.006	16.482	15.485	52.973	88	4	20.738	16.210	15.527	52.475	84	1	21.814	16.702	15.892	54.408	85
4	22.254	17.794	15.513	55.561	87	5	20.681	16.136	15.433	52.250	84	No.850 GERVASI ERIC					
5	21.031	16.331	15.505	52.867	87	6	20.652	16.142	15.410	52.204	84	1	23.339	17.176	16.091	56.606	84
6	20.852	16.258	16.006	53.116	82	No.820 DONCHI SIMONE						2	21.125	17.198	16.024	54.347	85
7	21.865	16.287	15.560	53.712	87	1	22.113	16.893	16.674	55.680	86	3	21.001	16.327	15.749	53.077	84
8	20.743	16.118	15.385	52.246	87	2	21.168	16.644	15.907	53.719	86	4	20.820	16.147	15.628	52.595	84
9	20.722	16.022	15.360	52.104	87	3	20.951	16.484	15.723	53.158	85	5	20.764	16.167	15.521	52.452	84
10	20.808	15.975	15.339	52.122	86	4	20.945	16.299	15.652	52.896	85	6	20.873	16.495	15.560	52.928	84
No.802 GRESSANI BRUNO						5	20.936	16.242	15.513	52.691	86	7	20.883	16.312	15.534	52.729	85
1	23.559	18.792	16.782	59.133	83	6	20.845	16.147	15.476	52.468	86	8	20.849	16.109	15.503	52.461	85
2	21.614	18.108	15.942	55.664	86	7	20.807	16.161	15.444	52.412	87	9	20.644	16.176	15.375	52.195	85
3	21.024	16.399	15.597	53.020	86	8	21.068	16.114	15.491	52.673	86	10	20.762	16.041	15.385	52.188	84
4	20.840	16.298	15.351	52.489	86	9	20.700	16.091	15.376	52.167	86	No.854 GERMANO VIOLA					
5	20.719	16.146	15.494	52.359	83	10	20.676	16.125	15.444	52.245	85	1	23.288	17.501	17.099	57.888	77
6	20.822	16.199	15.327	52.348	86	No.821 MONDIN PIETRO						2	58.044	17.853	16.415	1:32.312	80
7	21.512	16.379	15.386	53.277	87	1	22.346	16.951	16.041	55.338	85	3	22.047	17.031	16.252	55.330	80
8	20.869	16.331	15.344	52.544	87	2	21.346	18.428	17.717	57.491	60	4	21.773	16.856	16.001	54.630	81
9	30.079	16.447	15.633	1:02.159	85	3	22.567	16.363	15.674	54.604	86	5	21.742	16.863	16.137	54.742	80
10	20.790	16.318	15.594	52.702	84	4	20.904	16.266	15.734	52.904	86	6	22.720	17.206	15.907	55.833	82
No.804 MELIS MATTEO						5	20.977	16.223	15.751	52.951	84	7	21.876	16.866	15.978	54.720	81
1	21.931	16.818	16.084	54.833	84	6	21.153	16.182	15.472	52.807	86	8	21.596	16.688	15.907	54.191	81
No.805 COCOZZA ALESSANDRO						7	20.973	16.137	15.585	52.695	86	9	21.460	16.773	16.664	54.897	78
1	23.130	16.954	15.773	55.857	86	8	20.836	16.152	15.504	52.492	86	No.855 FURLAN MATTIA					
2	21.095	16.503	15.433	53.031	86	9	20.621	16.057	15.497	52.175	86	1	23.316	17.183	16.470	56.969	81
3	20.853	16.181	15.374	52.408	86	10	20.689	16.076	15.488	52.253	85	2	21.767	16.885	15.862	54.514	84
4	20.794	16.288	15.511	52.593	85	No.823 SANTAROSSA NICHOLAS						3	21.274	16.956	15.829	54.059	84
5	20.741	15.989	15.249	51.979	86	1	22.045	17.118	16.072	55.235	85	4	21.209	16.422	15.668	53.299	83
6	20.817	16.066	15.195	52.078	85	2	21.330	16.719	15.848	53.897	85	5	21.115	16.459	15.717	53.291	84
7	20.669	15.958	15.227	51.854	86	3	21.055	16.460	15.735	53.250	85	6	21.128	16.414	15.548	53.090	84
8	20.700	15.942	15.125	51.767	85	4	31.256	17.139	15.858	1:04.253	84	7	21.145	16.429	15.648	53.222	84
9	20.582	15.861	15.063	51.506	86	5	21.172	16.532	15.840	53.544	84	8	21.156	16.452	15.646	53.254	84
10	20.608	15.820	15.135	51.563	86	6	21.045	16.524	15.648	53.217	84	9	21.037	16.355	15.589	52.981	84
No.807 DE MARIA NICHOLAS						7	21.105	16.505	15.725	53.335	83	10	21.369	16.536	16.082	53.987	81
1	22.083	16.888	16.243	55.214	83	8	21.096	16.598	15.624	53.318	85						
2	21.610	16.514	16.077	54.201	85	9	21.132	16.525	15.676	53.333	84						
3	21.444	16.451	15.664	53.559	85	No.827 ARMENTO GIANLUCA											
4	21.709	16.396	15.701	53.806	85	1	23.493	18.282	17.431	59.206	82						
5	21.404	16.192	16.059	53.655	83	2	21.725	16.945	16.510	55.180	87						
6	21.441	16.450	16.234	54.125	81	3	21.621	16.683	15.980	54.284	84						
7	1:38.522	16.983	15.796	2:11.301	85	4	21.455	16.627	15.701	53.783	86						
8	21.093	16.325	15.536	52.954	84	5	21.427	16.475	15.671	53.573	86						
9	20.958	16.187	15.536	52.681	85	6	21.152	16.361	15.614	53.127	86						
No.808 GOTTI THOMAS						7	21.074	16.241	15.586	52.901	87						
1	21.791	16.787	15.938	54.516	84	8	21.116	16.313	15.596	53.025	86						
						9	21.057	16.189	15.598	52.844	86						



KA100 VERIFIED LIST (14 Drivers)

Document 1

No.	Entrant	Nation.	Driver	Nation	Equipment	Class
800	BATTINI FRANCO		BATTINI ALESSANDRO		IPK - OK1 / IAME / KOMET	KA100 Jr
802	GRESSANI GIANNI		GRESSANI BRUNO		IPK - OK1 / IAME / KOMET	KA100 Jr
804	TBKART RACING TEAM SRL		MELIS MATTEO		TBKART / IAME / KOMET	KA100 Jr
805	COCOZZA ARGENTINO		COCOZZA ALESSANDRO		TONY KART / IAME / KOMET	KA100 Jr
807	DE MARIA SALVATORE		DE MARIA NICHOLAS		WILD KART / IAME / KOMET	KA100 Jr
808	GOTTI CLAUDIO		GOTTI THOMAS		WILD KART / IAME / KOMET	KA100 Jr
820	ZANINI MIRIAM		DONCHI SIMONE		TONY KART / IAME / KOMET	KA100 Jr
821	MONDIN STEFANO		MONDIN PIETRO		PAROLIN / IAME / KOMET	KA100 Jr
823	SANTAROSSA OMAR		SANTAROSSA NICHOLAS		WILD KART / IAME / KOMET	KA100 Jr
827	ARMENTO MICHELE		ARMENTO GIANLUCA		IPK - OK1 / IAME / KOMET	KA100 Jr
830	TBKART RACING TEAM SRL		TSENG EASON		TBKART / IAME / KOMET	KA100 Jr
850	GERVASI MAURO		GERVASI ERIC		IPK - OK1 / IAME / KOMET	KA100 Sr
854	J TEAM A.S.D.		GERMANO VIOLA		IPK - PRAGA / IAME / KOMET	KA100 Sr
855	FURLAN MARCO		FURLAN MATTIA		WILD KART / IAME / KOMET	KA100 Sr