

TECHNICAL COMMUNICATION

Please be reminded that all engine parts need to comply with IAME Series UAE Sporting & Technical regulations and engine technical forms.

Only parts as supplied with the engine are allowed and must be kept strictly original and in compliance with the homologation form, therefore no modification in structure or in dimensions is allowed.

At any moment, the Scrutineers, following a decision of the Stewards, have the right to replace any part, any accessory or even the entire engine.

The technical forms are the main comparison reference for Scrutineers.

In case of doubts on the engine parts conformity, the comparison with the sample engine will be the definitive probating element.

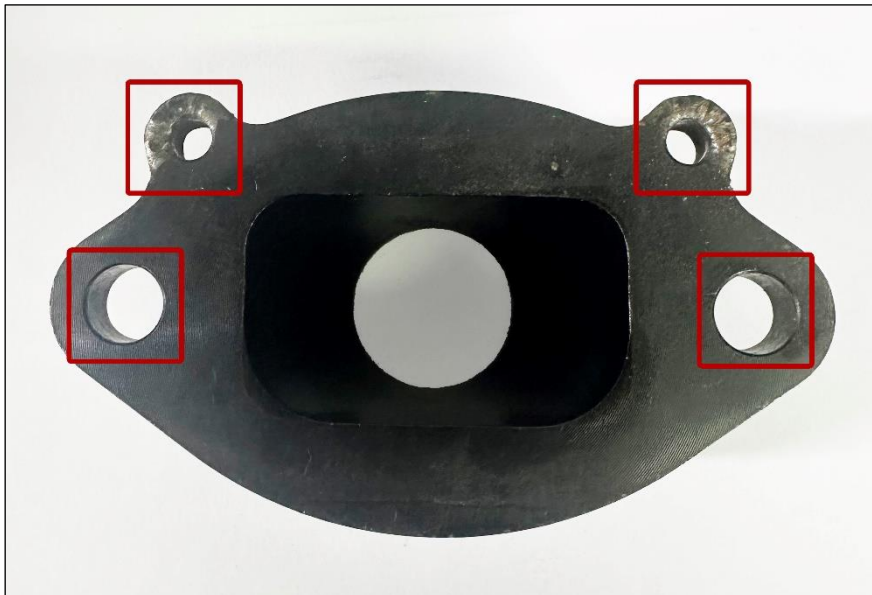
Any technical non-conformity will result in exclusion from the race.

For example

1. Exhaust Manifold

All dimensions and structure must match the technical form of the engine.

In case of any doubt, the part will be compared to the original part.



2. Ball Bearings

The markings on the bearings must be clearly visible.

Please ensure to have the bearings fitted the right way as shown in the picture below (left).

